

1200 Series Service Regulators

Data Sheet

A **Compact, Lightweight** regulator designed for residential natural gas applications and for fast, easy installation with interchangeable orifices and springs that provide a wide range of outlet pressures and flow rates.

Valve body configurations in 90° and 180° are available with 1/2", 3/4" and 1" NPT or BSP-TR connection sizes.

The 1213B, 1243B and 1253B w/ Jeavons regulators features a full capacity internal relief valve with large passages to assure the fast release of gas. The standard relief spring setting is 7.0" W.C. above the normal 7" W.C. outlet pressure setpoint.

All models conform to ANSI Code B109.4-1998 and CGA Service-type Regulator Specification CAN/CGA-6.18-M95.

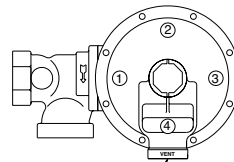


Regulator Descriptions

| Model Number | Description |
|--------------------|---|
| 1203 | Basic regulator, non-relieving with 1/4" NPT vent (Pilot). |
| 1203B | Basic regulator, non-relieving with 3/4" NPT vent. |
| 1213B | Basic regulator, full capacity internal relief with 3/4" NPT vent. |
| 1243B | Basic regulator with full capacity internal relief and overpressure shut-off with 3/4" NPT vent. |
| 1283B | Basic regulator, non-relieving and over-pressure shut-off with 3/4" NPT vent. |
| 1253B w/ Jeavons * | Basic regulator, full capacity internal relief, overpressure and underpressure shut-off with 3/4" NPT vent. |
| 1293B w/ Jeavons * | Basic regulator, non-relieving, overpressure and underpressure shut-off with 3/4" NPT vent. |

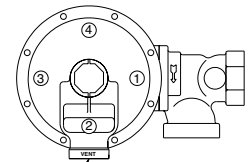
* For Jeavons (USSA) operation, see Brochure SB-8556.

1200 Assembly Positions For 90° Models



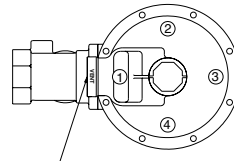
Standard Vent Position

Valve Body Position "A"



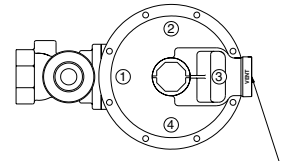
Standard Vent Position

Valve Body Position "B"



Standard Vent Position

Valve Body Position "C"



Standard Vent Position

Valve Body Position "D"



AMERICAN
METER COMPANY

1200 Series Service Regulators

Series 1200 Regulator Capacity Performance

Capacity 3/4" Outlet 1200B Regulator Set Point 7.0" W.C. @ 50 SCFH

SCFH 0.60 specific gravity gas @ 60° F & 14.7 PSIA. Pressure spring 70017P003. Outlet pressure variance not to exceed +2" -1" W.C. from set point, horizontal position.

| Inlet (PSIG) | Orifice Size | | | | |
|-----------------|--------------|------------|------|------|------|
| | 1/8 | 1/8 x 3/16 | 3/16 | 1/4 | 5/16 |
| 5 | 200 | 225 | 325 | 400 | 450 |
| 10 | 300 | 320 | 425 | 500 | 650 |
| 15 | 390 | 420 | 550 | 600 | 800 |
| 25 | 500 | 525 | 700 | 750 | 1000 |
| 35 | 600 | 650 | 1000 | 1050 | |
| 50 | 800 | 900 | 1000 | | |
| 60 | 800 | 900 | 1000 | | |

For optimum performance, maximum inlet pressure should not exceed maximum capacity rating for any given orifice size. The outlet pressure may vary as much as 0.5 W.C. if the diaphragm is in the vertical position.

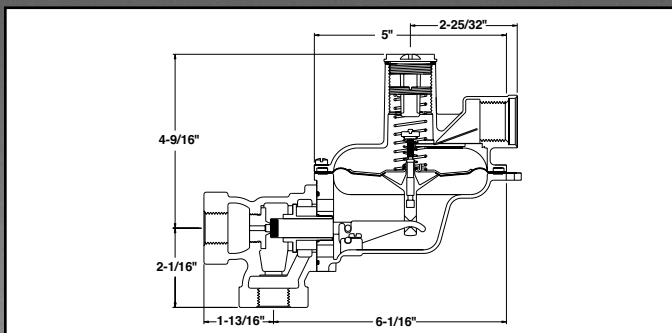
Capacity 1" Outlet 1200B Regulator Set Point 7.0" W.C. @ 50 SCFH

SCFH 0.60 specific gravity gas @ 60° F & 14.7 PSIA. Pressure spring 70017P003. Outlet pressure variance not to exceed +2" -1" W.C. from set point, horizontal position.

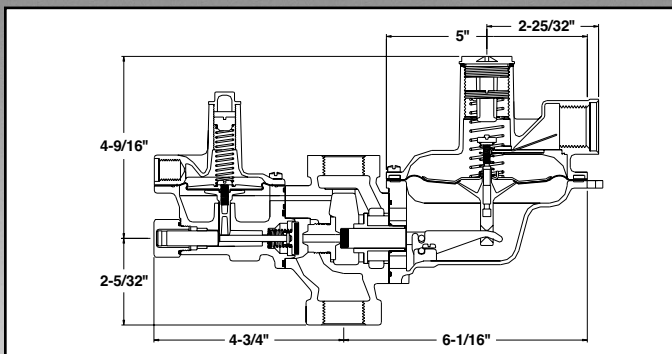
| Inlet (PSIG) | Orifice Size | | | | |
|-----------------|--------------|------------|------|------|------|
| | 1/8 | 1/8 x 3/16 | 3/16 | 1/4 | 5/16 |
| 5 | 200 | 225 | 325 | 400 | 450 |
| 10 | 300 | 320 | 425 | 500 | 650 |
| 15 | 390 | 400 | 550 | 600 | 800 |
| 25 | 500 | 525 | 700 | 750 | 1200 |
| 35 | 600 | 650 | 1000 | 1075 | 1200 |
| 50 | 800 | 900 | 1000 | | |
| 60 | 1000 | 1000 | 1000 | | |

For optimum performance, maximum inlet pressure should not exceed maximum capacity rating for any given orifice size. The outlet pressure may vary as much as 0.5 W.C. if the diaphragm is in the vertical position.

1213B-90° Dimensions



1243B Dimensions



Pressure Springs

| Outlet Pressure | Color Code | Part Number 1203B & 1283B | Color Code | Part Number 1213B & 1243B |
|-----------------|--------------|---------------------------|-------------|---------------------------|
| 5" to 9" W.C. | Black-Orange | 70017P002 | Orange | 70017P003 |
| 6" to 12" W.C. | Black-Red | 70017P065 | Black-Red | 70017P065 |
| 9" to 15" W.C. | Black-Green | 70017P004 | Black-Green | 70017P004 |
| 1/2" to 1 PSIG | Yellow | 70017P044 | — | — |
| 1 to 2 1/2 PSIG | Black-Blue | 70017P040 | Black-Blue | 70017P040* |
| 2 1/2 to 5 PSIG | Red-Orange | 70017P041 | Red-Orange | 70017P041 |

* 2 PSIG Max.

Order Information:

Model Number: _____

Kind and specific gravity of gas: _____

Inlet pressure, PSI: _____

Outlet pressure, inches W.C. (or PSIG): _____

Flow, scfh: _____

Orifice Size: _____

Size of inlet and outlet: _____

Contact American Meter with any questions or orders at the address and phone number below.

Shipping Weight –

28 lbs/carton of eight regulators

Reference Materials

Sales Bulletin SB-8505
Operating Instructions Manual IM-8704
Repair Parts RPL-8810

AMC Quality System

QMI is Accredited by:



ISO 9001 Certified
Certificate #006697



Dutch Council
for Accreditation



AMERICAN
METER COMPANY

Measurement Engineers Since 1836

Yesterday...Today...Tomorrow

300 Welsh Road, Building One
Horsham, PA 19044-2234
Phone: 215/830-1800
Fax 215/830-1890
www.americanmeter.com



CANADIAN METER

275 Industrial Road
Cambridge, Ontario
Canada N3H 4R7
Phone: 519/650-1900
Fax 519/650-1717
www.americanmeter.com

ELSTER AMCO