

Best Valve



TAE SUNG

The Complete Cryogenic Valve Supplier



태성가스기술
TAE SUNG GAS TECHNIQUE CO.

COMPANY HISTORY



1985 태성가스기술사설립(부산시 사상구 덕포동)
 각종 기화기 전문생산, 가스 플랜트 설비

1990 GAS용 초저온 GLOBE VALVE 생산

1995 부산 사상구 감전동으로 이전

1998 가압조정지 & 감압조정기 생산

1999 액레벨 밸브 기타 가스관련 기자재 생산

2000 현재위치로 자가공장 신축이전

2004 ISO 9001인증획득

PRODUCT

- 각종 기화기(O₂, N₂, Ar, CO₂, C₂H₄, LNG 등)
- 초저온 GLOBE VALVE
- REGULATOR & ECONOMIZER
- 액레벨게이지 밸브
- 각종 가스 플랜트 설비
- 진공작업(초저온 탱크, TANK LORRY 등)



Contents

Best Valve

TAE SUNG GAS TECHNIQUE CO.
Catalogue DA.08.2005



LONG STEM GLOBE VALVE(STINLESS STEEL)	6
SHORT STEM GLOBE VALVE(STINLESS STEEL)	7
LIFT CHECK VALVE (STINLESS STEEL)	8
GLOBE VALVE LONG STEM	9
GLOBE VALVE SHORT STEM	10
CHECK VALVE(LIFT TYPE)	11
DIVERTER VALVE	12
REGULATOR	13
ECONOMIZER	14
VAPORIZER	15
LEVEL GAUGE MANIFOLD VALVE	16
EMERGENCY GLOBE VALVE	17



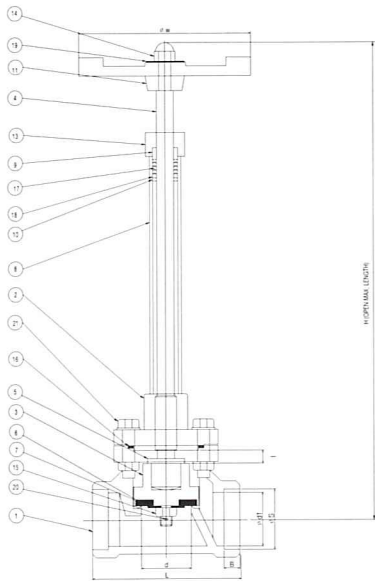
LONG STEM GLOBE VALVE

(STAINLESS STEEL)

TAESUNG GASTECH.



For Cryogenic Service



- **FEATURES** : PCTFE disc in our stainless steel globe valve provides a virtually bubble-tight seal
- **SERVICES** : Liquefied and vaporized atmospheric gases, LNG, etc
- **ENDS** : Socket weld, screwed end.



DESIGN DATA

DESIGN PRESSURE	4.0MPa
DESIGN TEMP.	-196°C to +75°C
KIND OF FLUID	LN ₂ , LO ₂ , LAr, LCO ₂ , LNG, LC ₂ H ₆
HYDROSTATIC TEST PRESSURE	6.0MPa
PNEUMATIC TEST PRESSURE	4.4MPa

MATERIAL SPECIFICATION

NO.	PARTS	MATERIAL	NO.	PARTS	MATERIAL
1	BODY	SCS13	12	UNION NUT	SUS304
2	BONNET	SCS13	13	GRAND NUT	SUS304
3	DISC	Bronze	14	HEXAGON NUT	SUS304
4	STEM	SUS304	15	HEXAGON NUT	SUS304
5	DISC STEM RING	SUS304	16	GASKET	V#7020
6	DISC PACKING	PCTFE	17	PACKING	PCTFE PTFE
7	SEAT WASHIER	SUS304	18	ADAPTER	PTFE
8	PIPE	SUS304	19	NAME PLATE	SUS304
9	GRAND	SUS304	20	SPLIT PIN	SUS304
10	SEAT RING	SUS304	21	SPRING WASHER	SUS304
11	HANDEL	ZDC 2	22	BOLT	SUS 304

DIMENSIONS

SIZE	d	d1	L	S	B	I	W	H	Cv
15A	15	18	85	22.0	12	14	80	228	2.9
20A	20	25	90	27.3	11.0	12	100	255	6.1
25A	25	31	88.5	34.4	12.5	18	100	290	9.3
40A	40	43	120	48.7	12.5	15.4	140	345	22.0
50A	50	55	140	61.0	16.5	21	140	355	38.0

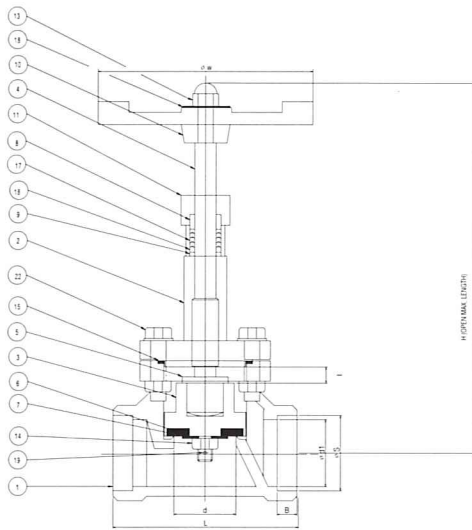
80A
100A

SHORT STEM GLOBE VALVE (STAINLESS STEEL)

TAESUNG GASTECH.



For Cryogenic Service



- **FEATURES** : PCTFE disc in our stainless steel globe valve provides a virtually bubble-tight seal
- **SERVICES** : Liquefied and vaporized atmospheric gases, LNG, etc
- **ENDS** : Socket weld, screwed end.



DESIGN DATA

DESIGN PRESSURE	4.0MPa
DESIGN TEMP.	-40°C to +75°C
KIND OF FLUID	LN ₂ , LO ₂ , LAr, LCO ₂ , LNG, LC ₂ H ₆
HYDROSTATIC TEST PRESSURE	6.0MPa
PNEUMATIC TEST PRESSURE	4.4MPa

MATERIAL SPECIFICATION

NO.	PARTS	MATERIAL	NO.	PARTS	MATERIAL
1	BODY	SCS13	12	GRAND NUT	SUS304
2	BONNET	SCS13	13	HEXAGON NUT	SUS304
3	DISC	Bronze	14	HEXAGON NUT	SUS304
4	STEM	SUS304	15	GASKET	V#7020
5	DISC STEM RING	SCS304	16	PACKING	VIRGIN TEFLON
6	DISC PACKING	PCTFE PTFE	17	ADAPTER	PTFE
7	SEAT WASHER	SUS304	18	NAME PLATE	SUS304
8	GRAND	SUS304	19	SPLIT PIN	SUS304
9	SEAT RING	SUS304	20	SPRING WASHER	SUS304
10	HANDEL	ZDC 2	21	BOLT	SUS304
11	UNION NUT	SUS304	22		

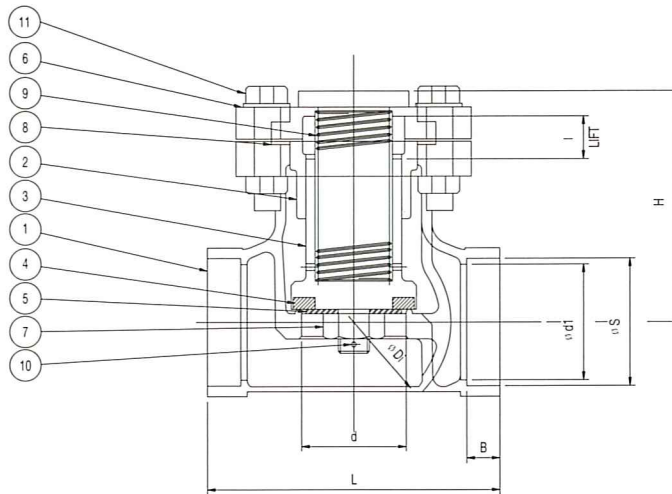
DIMENSIONS

SIZE	d	d1	L	S	B	I	W	H	Cv
15A	15	18	85	22.0	12	14	80	160	2.9
20A	20	25	90	27.3	11.0	12	100	186	6.1
25A	25	31	88.5	34.4	12.5	18	100	183	9.3
40A	40	43	120	48.7	12.5	15.4	140	212	22.0
50A	50	55	140	61.0	16.5	21	140	220	38.0

80A
100A



For Cryogenic Service



- **Features** : Prevents reverse flow in critical cryogenic applications
- **Services** : Liquefied and vaporized atmospheric gases, LNG, etc
- **Ends** : Socket weld

DESIGN DATA

DESIGN PRESSURE	4.0MPa
DESIGN TEMP.	-196°C to +75°C
KIND OF FLUID	LN ₂ , LO ₂ , LAr, LCO ₂ , LNG, LC ₂ H ₂
HYDROSTATIC TEST PRESSURE	6.0MPa
PNEUMATIC TEST PRESSURE	4.4MPa

MATERIAL SPECIFICATION

NO.	PARTS	MATERIAL	NO.	PARTS	MATERIAL
1	BODY	SCS 13	7	HEXAGON NUT	SUS 304
2	BONNET	SCS 13	8	GASKET	V# 7020
3	DISC	Bronze	9	SPRING	MONEL
4	DISC PACKING	PCTFE	10	SPLIT PIN	SUS 304
5	SET WASHER	SUS 304	11	BOLT	SUS 304
6	UNION NUT	BC 6			

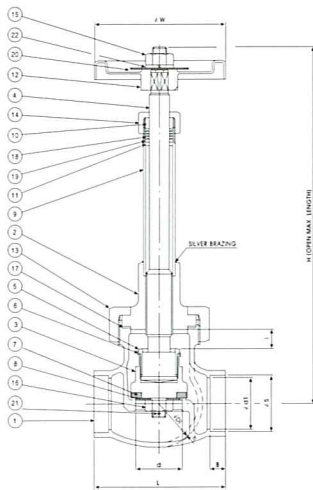
DIMENSIONS

SIZE	d	d1	L	S	B	I	H	Di	Cv
15A	15	18	85	22	12	14	50	31	2.5
25A	20	31	88.5	34.4	12.5	12	55	40	9.3
40A	40	45	120	48.7	16.5	18	90	68	20

50A
80A
100A



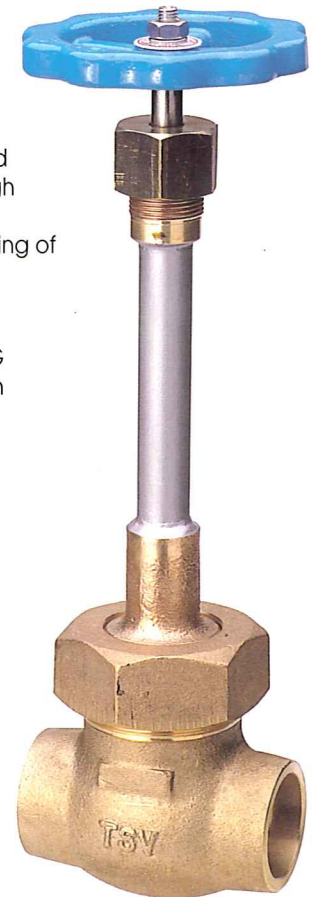
For Cryogenic Service



Construction, Function : This screen off perpendicularly the fluid pipe in valve then the fluid flows from the low place to the high place.
This uses for the opening and shutting of fluid in equipment pipe.

Character : In the DISK PACKING uses P, C, T, F, E and in the GRAND PACKING is constructed the V-PACKING and a assistance PACKING so HANDLE operation is easy and uses as very the high gas pipe valve.

Kind : WELDING TYPE, SCREW TYPE.



DESIGN DATA

DESIGN PRESSURE	3.0MPa
DESIGN TEMP.	-196°C to +75°C
KIND OF FLUID	LN ₂ , LO ₂ , LAr, LCO ₂ , LNG, LC ₂ H ₄
HYDROSTATIC TEST PRESSURE	4.5MPa
PNEUMATIC TEST PRESSURE	3.3MPa

MATERIAL LIST FOR ONE SET

NO.	PARTS	MATERIAL	NO.	PARTS	MATERIAL
1	BODY	BC6(JIS)	12	HANDEL	ZDC 2
2	BONNET	BC6(JIS)	13	UNION NUT	BC 6
3	DISC	BC6(JIS)	14	GRAND NUT	C3604B
4	STEM	SUS304	15	HEXAGON NUT	SUS304
5	DISC STEM RING	C3604B	16	HEXAGON NUT	SUS304
6	LOCK PLATE	C1100P	17	GASKET	V#7020
7	DISC PACKING	PCTFE	18	PACKING	PTFE
8	SEAT WASHIER	SUS304	19	ADAPTER	PTFE
9	PIPE	SUS304	20	NAME PLATE	A1200P
10	GRAND	C3604B	21	SPLIT PIN	SUS304
11	SEAT RING	C3604B	22	SPRING WASHER	SUS304

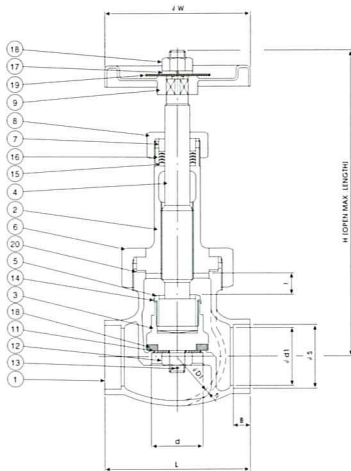
DIMENSIONS

SIZE	d	d1	L	S	B	I	W	H	Di	CV
8A	13	10	69	13.9	8.0	7	65	197	28	
10A	13	13	69	17.4	9.5	7	65	193	28	2.9
15A	15	20	85	21.8	10.5	10	80	217	31	2.9
20A	20	25	105	27.3	11.0	12	100	270	40	6.1
25A	25	31	113	34.1	13.0	14	100	287	49	9.3
40A	40	45	12	48.7	16.5	18	140	340	68	22
50A	50	55	140	61.0	16.5	21	140	340	85	38

↓
100A



For Cryogenic Service



Construction, Function : This screen off perpendicularly the fluid pipe in valve then the fluid flows from the low place to the high place. This uses for the opening and shutting of fluid in equipment pipe.

Character : In the DISK PACKING uses P, T, F, E and in the GRAND PACKING is constructed the V-PACKING and a assistance PACKING so HANDLE operation is easy and uses as very the high gas pipe valve

Kind : WELDING TYPE, SCREW TYPE



DESIGN DATA

DESIGN PRESSURE	3.0MPa
DESIGN TEMP.	-40 ~ 75 °C
KIND OF FLUID	N ₂ , O ₂ , Ar, CO ₂ , NG, C.H ₄
HYDROSTATIC TEST PRESSURE	4.5MPa
PNEUMATIC TEST PRESSURE	3.3MPa

MATERIAL LIST FOR ONE SET

NO.	PARTS	MATERIAL	NO.	PARTS	MATERIAL
1	BODY	BC6(JIS)	11	SEAT WASHER	SUS304
2	BONNET	BC6(JIS)	12	HEXAGON NUT	SUS304
3	DISC	BC6(JIS)	13	SPLIT PIN	SUS304
4	STEM	SUS304	14	ROCK PLATE	C1100P
5	DISC STEM RING	C3604B	15	ADAPTER	PTFE
6	UNION NUT	BC6	16	V RING	PTFE
7	GRAND	C3604B	17	SPRING WASHER	SUS304
8	GRAND NUT	C3604B	18	HEXAGON NUT	SUS304
9	HAND WHEEL	ZDC 2	19	NAME PLATE	A1200P
10	DISC SEAT	PCTFE	20	GASKET	V#7020

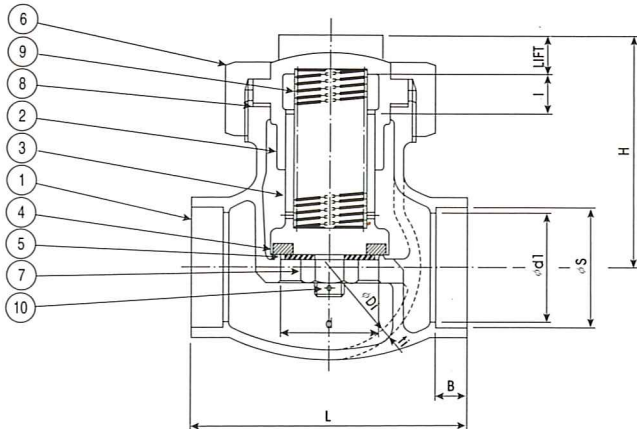
DIMENSIONS

SIZE	d	d1	L	S	B	I	W	H	Di	ti
8A	13	10	69	13.9	8.0	7	65	140	28	3.5
10A	13	13	69	17.4	9.5	7	65	130	28	3.5
15A	15	20	85	21.8	10.5	10	80	153	31	3.5
20A	20	25	105	27.3	11.0	12	100	173	40	4.0
25A	25	31	113	34.1	13.0	14	100	186	49	4.5
40A	40	45	120	48.7	16.5	18	140	206	68	5.0
50A	50	55	140	61.0	16.5	21	140	208	85	5.5

↓
(00A)



For Cryogenic Service



Construction, Function : This lets the fluid in valve flow into one way and prevents an inverse current of the fluid. This is constructed a lift type that valve-body opens and shuts the upper and lower sides moving at valve sheet and the use pressure is the 30kg/cm²

DESIGN DATA

DESIGN PRESSURE	3.0MPa
DESIGN TEMP.	-196~75 °C
KIND OF FLUID	LN ₂ , LO ₂ , LAr, CO ₂ , LNG, LC ₂ H ₆
HYDROSTATIC TEST PRESSURE	4.5MPa
PNEUMATIC TEST PRESSURE	3.3MPa

MATERIAL LIST FOR ONE SET

NO.	PARTS	MATERIAL	NO.	PARTS	MATERIAL
1	BODY	BC 6 (JIS)	6	UNION NUT	BC 6
2	BONNET	BC 6 (JIS)	7	HEXAGON NUT	SUS 304
3	DISC	BC 6 (JIS)	8	GASKET	V# 7020
4	DISC PACKING	PCTFE	9	SPRING	SUS 304
5	SET WASHER	SUS 304	10	SPLIT PIN	SUS 304

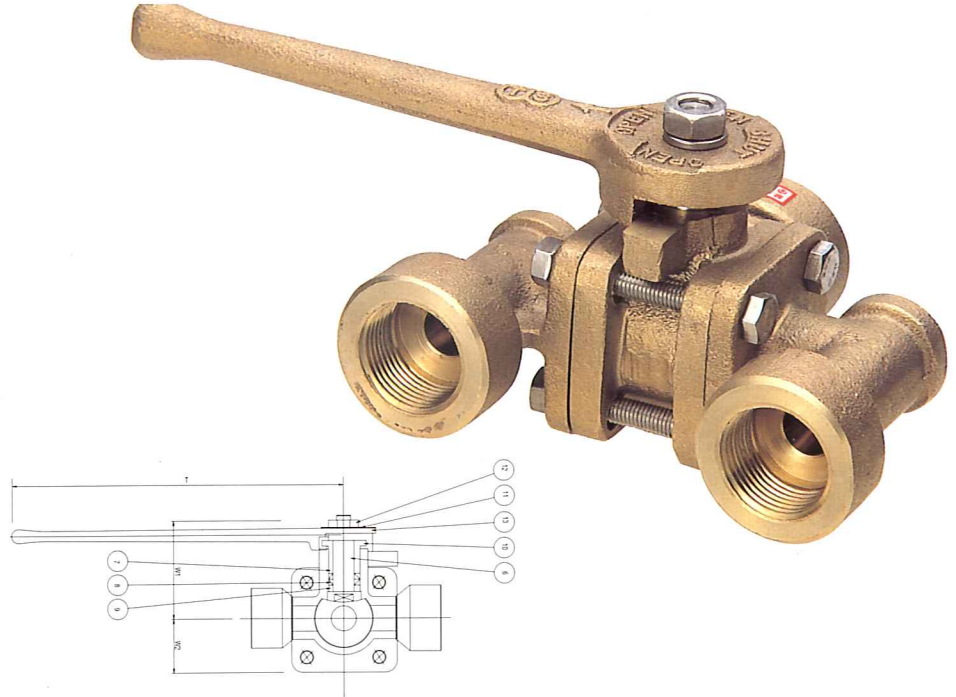
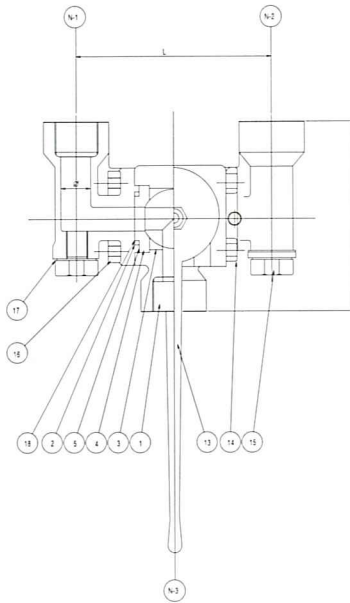
DIMENSIONS

SIZE	d	d1	L	S	B	I	H	Di	ti
15A	15	20	85	21.8	10.5	10	59	31	3.5
25A	24	31	113	34.1	13.0	14	77	49	4.5
40A	40	45	120	48.7	16.5	18	94	68	5.0
50A	50	55	140	61.0	16.5	21	108	85	5.5

↓
100A



For Cryogenic Service



Construction, Function : This is called THREE-WAY VALVE and is different to THREE VALVE that changes the simple flow direction of GAS. When the safety valve in each sides is broken on air temperature, this has the capacity standard for taking capacity.
And this has a rupture capacity for taking the evaporated gas when the surface temperature comes 800°C after a fire occurs around tank and the vacuum is broken.

DESIGN DATA

DESIGN PRESSURE	3.0MPa
DESIGN TEMP.	-196~75 °C
KIND OF FLUID (FOR GAS)	LN ₂ , LO ₂ , LAr, LCO ₂ , LNG
HYDROSTATIC TEST PRESSURE	4.5MPa
PNEUMATIC TEST PRESSURE	3.3MPa

NOZZLE SIZE

SIZE	N-1	N-2	N-3	φ
3/4" 20A)	3/4" PT)	3/4" PT)	3/4" PT)	15mm
1" 25A)	1" PT)	1" PT)	1" PT)	20mm
1,1/2" 40A)	1,1/2" PT)	1,1/2" PT)	1,1/2" PT)	31mm

MATERIAL LIST FOR ONE SET

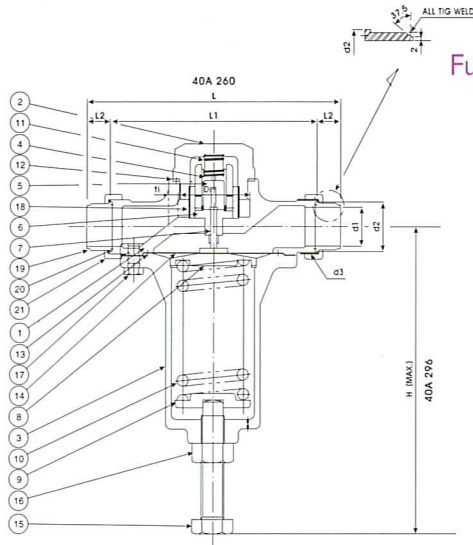
NO.	PARTS	MATERIAL	NO.	PARTS	MATERIAL
1	BODY	BC 6	10	STEM BUSH	SUS304
2	CAP	BC 6	11	SPRING WASHER	SUS304
3	BALL	SUS 304	12	NUT	SUS 304
4	BALL SEAT	R-PTFE	13	LEVER	BC 6
5	O-RING	VITON	14	BOLT	SUS304
6	STEM	SUS 304	15	PLUG BOLT	C3771BD
7	GLAND PACKING	R-PTFE	16	NUT	SUS 304
8	GLAND RING	SUS 304	17	GASKET	R-PTFE
9	BEARING	R-PTE	18	LINER	R-PTFE

DIMENSIONS

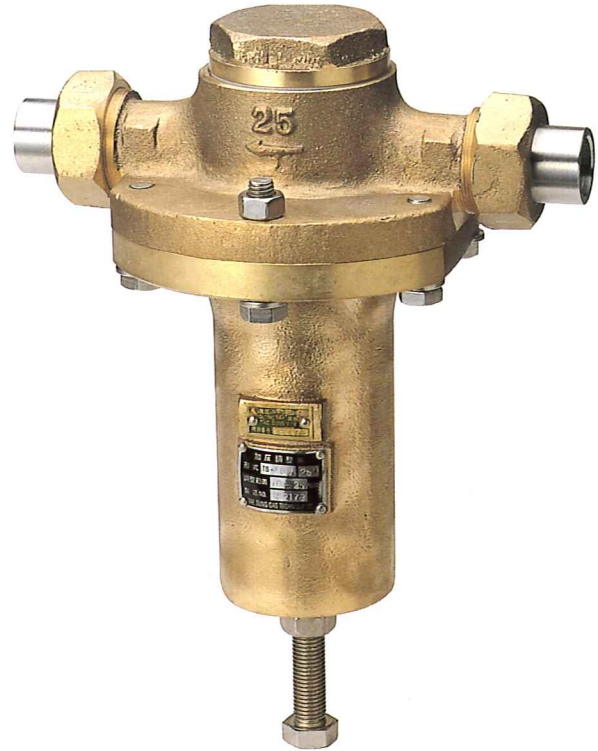
SIZE	L	H	T	W1	W2
20A	108	100	172	70	30
25A	134	125	175	76	40
40A	204	165	183	109	54



For Cryogenic Service



Function, Kind : This regulates regularly the set-pressure at your request and has a large capacity size and three kinds-20A, 25A, 40A and classifies the low pressure of 4~15kg/cm² and the high pressure of 15~30kg/cm².



DESIGN DATA

DESIGN PRESSURE	3.0MPa
DESIGN TEMP.	-196~75 °C
KIND OF FLUID	LN ₂ , LO ₂ , LAr, CO ₂ , LNG, LC ₂ H ₆
HYDROSTATIC TEST PRESSURE	4.5MPa
PNEUMATIC TEST PRESSURE	3.3MPa
ADJUST RANGE	0.4~1.5MPa
SETTING PRESS	SEE P/O SHEET

MATERIAL LIST FOR ONE SET

NO.	PARTS	MATERIAL	NO.	PARTS	MATERIAL
1	BODY	BC6(JIS)	14	DIAPHRAGM	SUS304
2	BOTTOM COVER	BC6(JIS)	15	HEXAGON BOLT	SUS304
3	SPRING CASE	BC6(JIS)	16	HEXAGON NUT	SUS304
4	DISC	C4622B	17	HEXAGON BOLT	SUS304
5	DISC PACKING	TEFLON	18	STRAINER	SUS304
6	SEAT	C4622B	19	SLEEVE	SUS304
7	STEM	C4622B	20	GASKET	V#7020
8	SPRING RETAINER	C3604B	21	UNION NUT	BC6
9	SPRING PALTE	C3604B	22	NAME PLATE	A1200P
10	SPRING	UNICR PLATE	23	HEXAGON BOLT	SUS304
11	SPRING	SUS304WH	24	HEXAGON NUT	SUS304
12	GASKET	TEFLON	25	STUD BOLT	SUS304
13	GASKET	TEFLON			

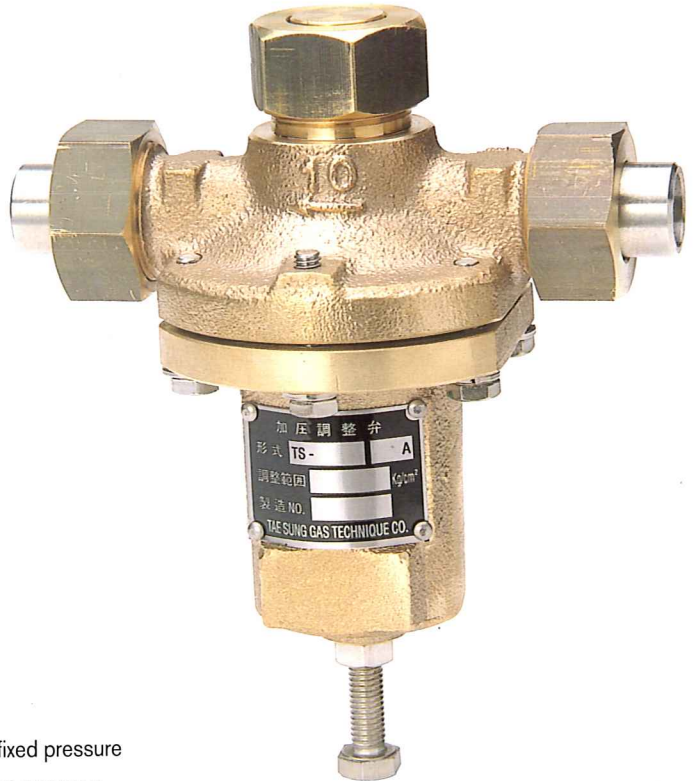
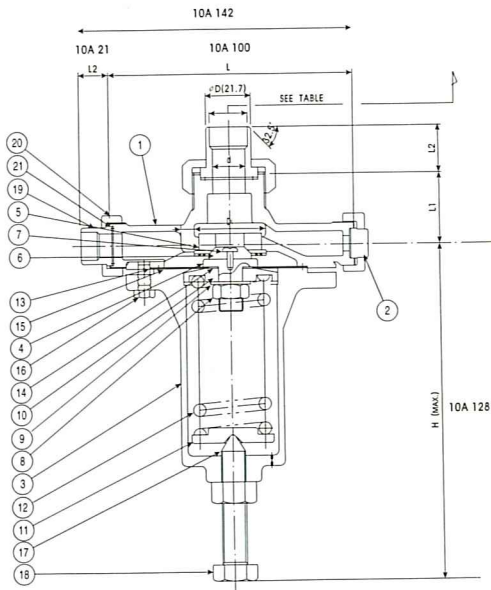
DIMENSIONS

MODEL NO.	SIZE	d	L1	L2	L	d1	d2	d3	i	H (ABOUT)	Di	ti	M	C	Hi	CV
TSR-15-40	40A	38	222	22.5	267	40.9	54	M62	71	320	94	8.0	M12	168	62.0	2.55
TSR-15-25	25A	25	196	23.5	243	26.4	41	M48	58	280	73	7.0	M12	151	53.0	1.9
TSR-15-20	20A	20	172	25.5	223	20.9	33	M38	46	250	62	6.0	M12	126	48.0	1.3

40A



For Cryogenic Service



Function, Kind : This is valve that increase the pressure or keeps the fixed pressure when the fluid pressure is higher is higher than the use pressure. Our company produces a 10A 15A ECONOMIZER.

DESIGN DATA

DESIGN PRESSURE	3.0MPa
DESIGN TEMP.	-196~75 °C
KIND OF FLUID	LN ₂ , LO ₂ , LAr, CO ₂ , LNG, LC ₂ H ₆
HYDROSTATIC TEST PRESSURE	4.5MPa
PNEUMATIC TEST PRESSURE	3.3MPa

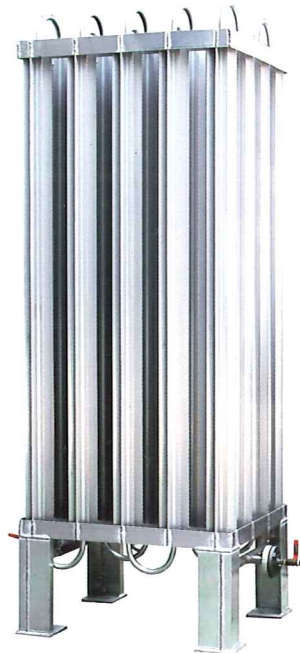
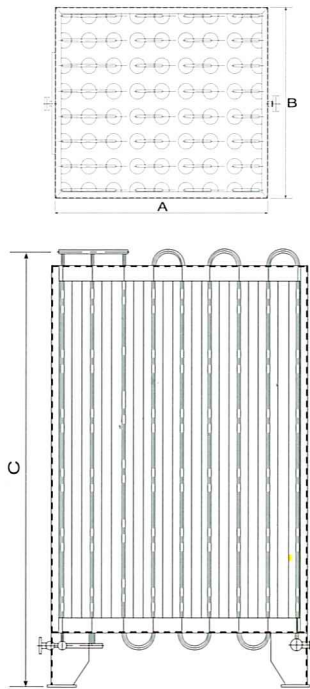
METERIAL LIST FOR ONE SET

NO.	PARTS	MATERIAL	NO.	PARTS	MATERIAL
1	BODY	BC 6	13	GASKET	TEFLON
2	COVER	BC 6	14	GASKET	TEFLON
3	SPRING CASE	BC 6	15	DIAPHARGM	SUS304HW
4	DISC	SUS304	16	HEXAGON BOLT	SUS304
5	SEAT	C4622B	17	HEXAGON BOLT	SUS304
6	DISC PACKING	PCTFE	18	HEXAGON NUT	SUS304
7	MACHINE SCREW	SUS304	19	SLEEVE	SUS304
8	HEXAGON NUT	SUS304	20	UNION NUT	SUS304
9	SPRING LOCK WASHER	SUS304	21	GASKET	TEFLON
10	SPRING RETAINER	C3604B	22	NAME PLATE	A1200P
11	SPRING PLATE	C3604B	23	STUD BOLT	SUS304
12	SPRING	SUP6	24	HEXAGON NUT	SUS304

15A



For Cryogenic Service



Construction, Function : Evaporator for evaporating liquefaction GAS and that is able to use the air as a heat source.

This is made near a very low temperature tank and settler the form by the use terms and designed being able to send by the pressure in a state of safety. This classifies the add pressure evaporator and the send evaporator and has the maximum economic efficiency and the minimum expense effect

DESIGN DATA

KIND OF FLUID	LN, LO, LAr, LC.H., LCO., LNG
CAPACITY	20-2000 NM ³ /hr
DESIGN PRESSURE	2.2MPa
DESIGN TEMP.	-196-40 °C
HYDROSTATICS	3.0MPa
PNEUMATICS	2.2Mpa

DIMENSIONS

TYPE	CAPACITY	A(mm)	B(mm)	C(mm)	IN	OUT	TYPE	CAPACITY	A(mm)	B(mm)	C(mm)	IN	OUT
TS-V-20	20NM ³ /hr	680	320	1300	1/2"	1/2"	TS-V-500	500NM ³ /hr	1740	1540	3500	1"	2"
TS-V-40	40NM ³ /hr	680	680	1300	1/2"	1/2"	TS-V-600	600NM ³ /hr	1940	1540	3500	1"	2"
TS-V-60	60NM ³ /hr	1006	680	1300	1/2"	1/2"	TS-V-800	800NM ³ /hr	1940	1540	4500	1"	2"
TS-V-100	100NM ³ /hr	1130	880	2500	3/4"	1"	TS-V-1000	1000NM ³ /hr	1940	1940	4500	1.1/2"	3"
TS-V-200	200NM ³ /hr	1890	1140	2500	1"	1.1/2"	TS-V-1500	1500NM ³ /hr	2540	2370	4500	2"	3"
TS-V-300	300NM ³ /hr	1540	1940	3500	1"	1.1/2"	TS-V-2000	2000NM ³ /hr	2740	2540	5100	2"	3"
TS-V-400	400NM ³ /hr	1740	1140	3500	1"	2"							

기타주문사항 가능

LEVEL GAUGE MANIFOLD VALVE



DESIGN DATA

DESIGN PRESSURE	3.0MPa
DESIGN TEMP.	-196-75 °C
KIND OF FLUID	N ₂ , O ₂ , Ar, CO ₂ , NG, C ₂ H ₆
HYDROSTATIC TEST PRESSURE	4.5MPa
PNEUMATIC TEST PRESSURE	3.3MPa



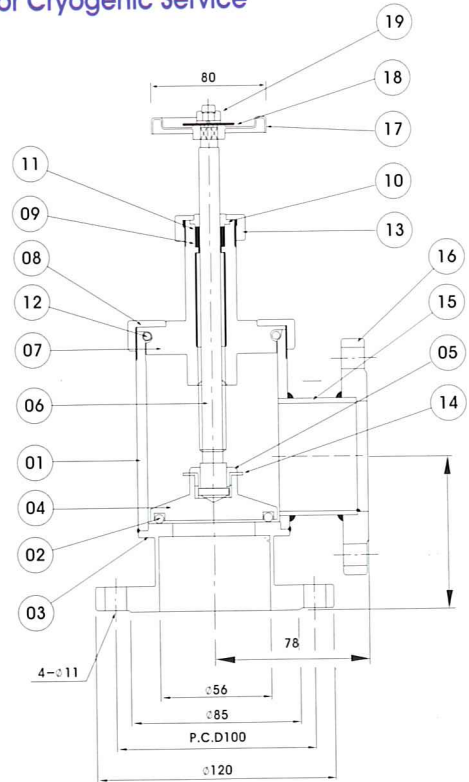
VACUUM VALVE



DESIGN DATA

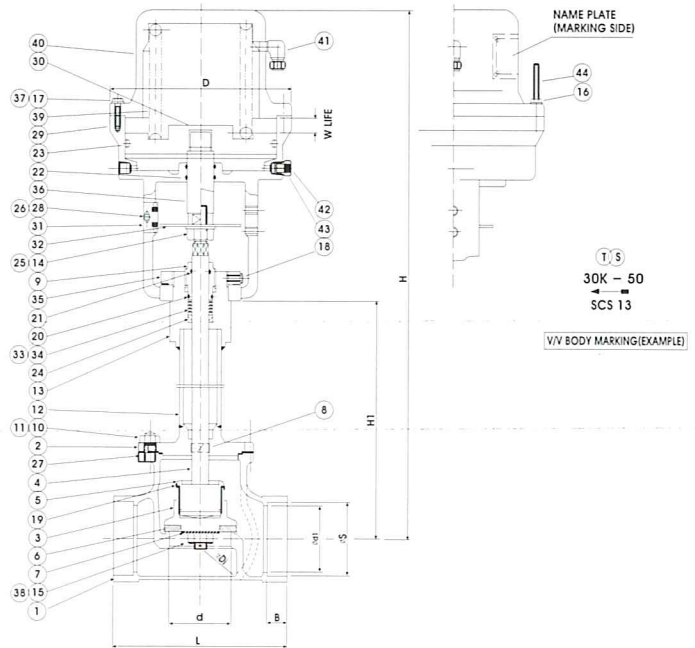
SIZE	40A
DESIGN PRESSURE	1.0 MPa
DESIGN TEMP.	40°C
KIND OF FLUID	GAS
HYDROSTATIC TEST PRESSURE	1.5 MPa
PNEUMATIC TEST PRESSURE	1.1 MPa

For Cryogenic Service



MATERIAL SPECIFICATION

NO.	PARTS	MATERIAL	NO.	PARTS	MATERIAL
1	BODY	SUS304	11	O-RING	N.B.R
2	DISC	N.B.R	12	O-RING	N.B.R
3	SEAT	SCS304	13	GLAND NUT	SUS304
4	DISC HOLDER	SUS304	14	DISC WASHER	SUS304
5	DISC LOCK NUT	SUS304	15	OUTLET PIPE	SUS304
6	STEM	SUS304	16	FLANGE	SUS304
7	BONNET	SUS304	17	HANDLE	FC
8	BONNET NUT	SUS304	18	NAME PLATE	SUS304
9	PACKING BUSH	BRASS	19	NUT	SUS304
10	GLAND	BRASS	20		



DESIGN DATA

DESIGN PRESSURE	3.0 MPa
DESIGN TEMP.	-196~75 °C
KIND OF FLUID	LN ₂ , LO ₂ , LA _r , LCO ₂ , LNG, LC ₂ H ₆
HYDROSTATIC TEST PRESSURE	4.5 MPa
PNEUMATIC TEST PRESSURE	3.3 MP

MATERIAL SPECIFICATION

NO.	DESCRIPTION	MATERIAL	NO.	DESCRIPTION	MATERIAL	NO.	DESCRIPTION	MATERIAL
1	BODY	SCS13	16	HEXAGON NUT	SUS304	31	INDICATOR PLATE	C2600P
2	BONNET	SCS13	17	HEXAGON BOLT	SUS304	32	INDICATOR PLATE	SUS304
3	DISC	SUS304	18	HEXAGON BOLT	SUS304	33	ADAPTER	PTFE
4	STEM	SUS304	19	LOCK PLATE	SUS304	34	PACKING	PTFE
5	DISC STEM RING	SUS304	20	O-RING	VITON	35	ADAPTER	SUS304
6	DISC PACKING	PCTFE	21	O-RING	VITON	36	PISTON ROD	SUS304
7	SEAT WASHER	SUS304	22	O-RING	VITON	37	WASHER	SUS304
8	BUSH	PTFE(20G)	23	O-RING	VITON	38	SPLIT PIN	SUS304
9	GRAND	SUS304	24	PACKING RING	PTFE	39	SPRING	SUP 10
10	BONNET BOLT	SUS304	25	SPRING LOCK WASHER	SUS304	40	CYLINDER COVER	AC4A-F
11	BONNET BOLT NUT	SUS304	26	SPRING LOCK WASHER	SUS304	41	EXHAUST PLUG	C3604B
12	EXTENDED PIPE	SUS304TP	27	GASKET	V#7020	42	FUSE METAL	FAI10091
13	STUFFING BOX	SUS304	28	HEAD SCREW	SUS304	43	PLUG	C3604B
14	HEXAGON NUT	SUS304	29	CYLINDER	AC4A-F	44	CYLINDER BOLT	SUS304
15	HEXAGON NUT	SUS304	30	PISTON	C3771B			

DIMENSIONS

SIZE	d	d1	L	S	B	D	W	H1	H	Di
40A	40	45	120	48.7	16.5	160	14	240	515	68
50A	50	55	140	61.0	16.5	206	16	260	530	85

80A
(100A)



GAS Technique.co

태성가스기술

TAE SUNG GAS TECHNIQUE CO.

·부산시 강서구 송정동 1561-7번지
·TEL. (051) 831-2770~2
·FAX. (051) 831-2774

·<http://www.tsgas.com>,
·E-mail:tsgas@hanmail.net